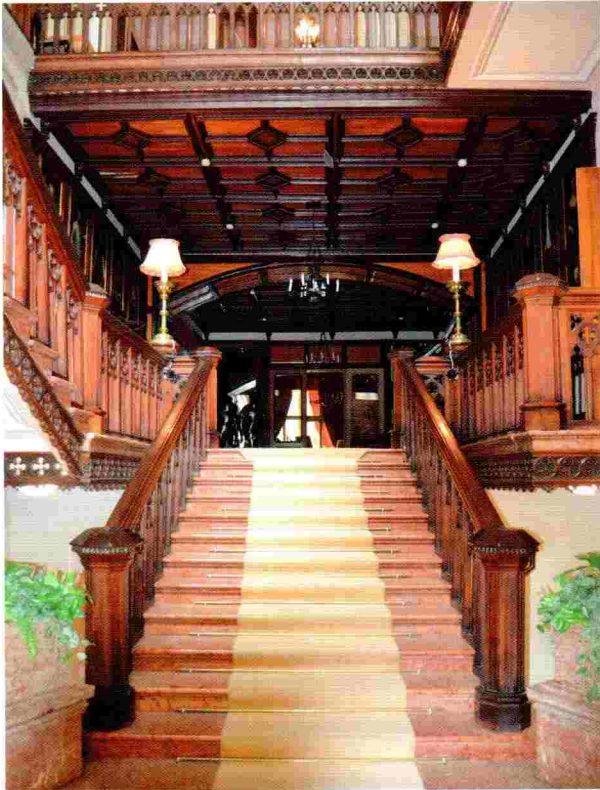


design travel

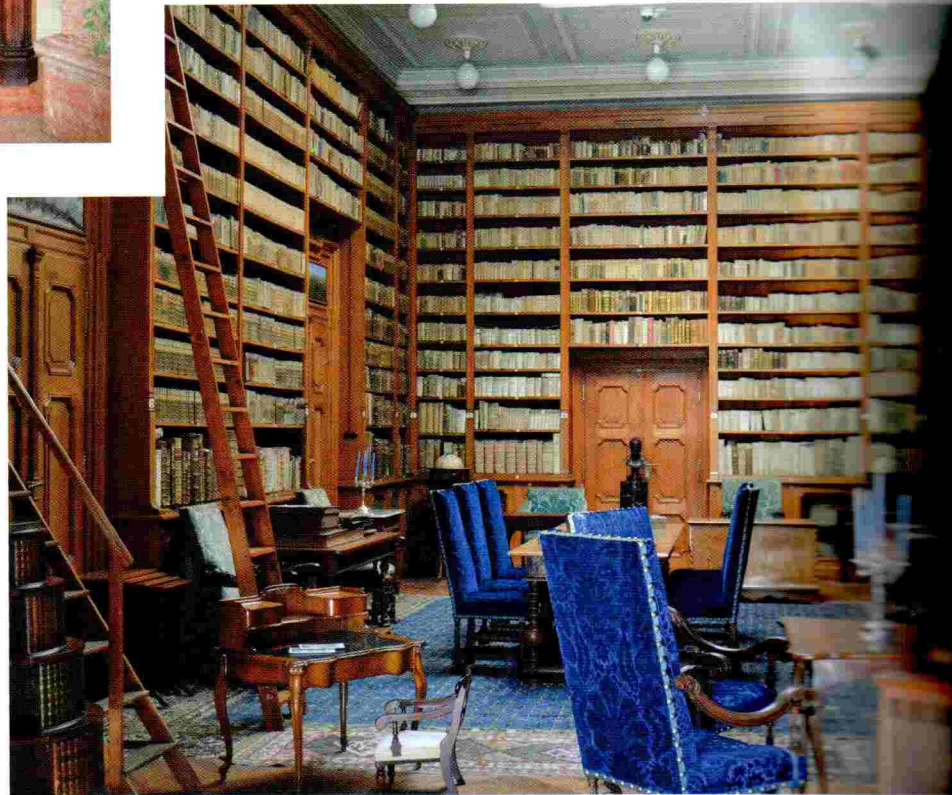


It is common in Europe to find great

mansions dating back to previous centuries. A mansion or manor house is usually a large house in the countryside where the lord of the manor would have held his manorial courts and hosted lavish banquets and entertainments. Many of these mansions were built on the foundations of earlier buildings such as castles or forts.

The Betliar Mansion is no different. The manor was built on the site of a small castle that was owned by the Bebek family in the 15th century. After a long period of building and renovating the mansion that we know now was finally completed in 1880. The layout includes 32 rooms, spread over three floors, with a tower on each of the four corners of the mansion, stunning halls, a family portrait gallery, a number of salons, a huge dining room, an extensive library, a large kitchen area, a grotto and much more.

Walking around this mansion is like going through a series of beautifully decorated rooms with many rare pieces of art on display including unusual objects such as an Egyptian mummy. The games room, for example, is not only decorated



with many valuable portrait paintings but is also filled with parlour game furniture such as a card table with a striped and geometrical inlay from the second half of the 18th century, classical game tables from the end of 18th century, and a full-size billiard table from the end of the 19th century. From an artistic and historical standpoint, the

most important piece of art in this room is a large painting by the Flemish artist Jan Baptist van de Meiren from 1688 - depicting a battle scene between the Turkish army and Eugen Savoj at Eszek.

The Andrassy family fascination with the sophisticated Oriental culture that was so popular back then is revealed in the